

Diplomatic Oleodinamica in the **MOBILE** sector

Products

**Case history:
safety and high
performances**



*Compact solenoid
directional valve with
DEUTSCH plug*

Highly innovative solutions for mobile applications

For the mobile applications Diplomatic Oleodinamica develops a range of specific solutions that are:

COMPACT



the extremely reduced dimensions of the components are possible thanks to the electro-hydraulic technology

RESISTANT



to the atmospheric agents, thanks to the stringent applied production standards: IP67, DEUTSCH connectors, epoxy paint coatings suitable to ensure a salt spray resistance longer than 360 hours

VERSATILE



i.e. they can calibrate the movement speed and precision according to the different operational needs

INTERFACEABLE



via the remote piloted systems and the machine controls

CHEAP



thanks to the development of production synergies with the industrial sector

LOW POWER

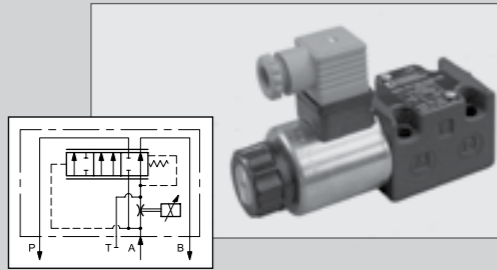


using 17-watt solenoids

PRODUCTS SUITABLE TO ALL MOBILE APPLICATION FIELDS: AGRICULTURE, EARTH MOVING, MATERIAL HANDLING AND LIFT PLATFORMS

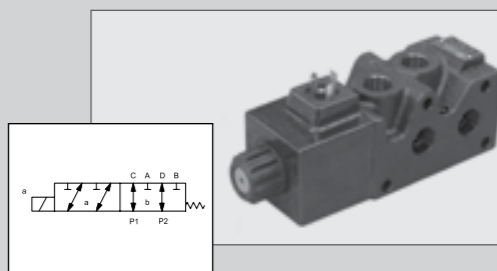
**DIRECT OPERATED
FLOW CONTROL VALVE
WITH PROPORTIONAL
CONTROL AND
COMPENSATION - QDE**

p max 250 bar
Q max up to 80 l/min



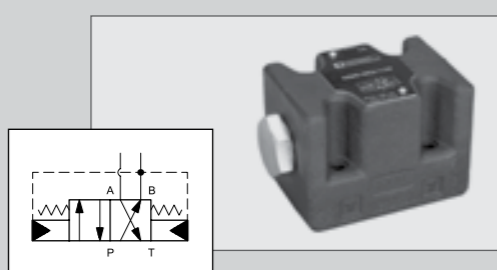
**BANKABLE
SIX-WAY FLOW
SELECTION
SWITCH - BFD**

p max 320 bar
Q max up to 90 l/min



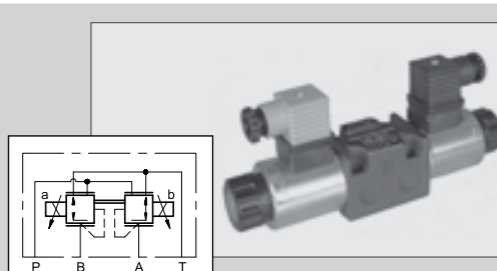
**SELF-REVERSING
VALVE - DSB**

p max 350 bar
Q max up to 100 l/min



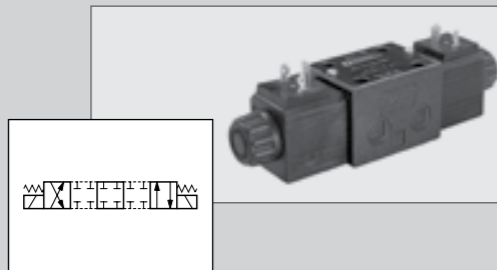
**DIRECT OPERATED
PRESSURE REDUCING
VALVE WITH
PROPORTIONAL
CONTROL - ZDE3**

p max 100 bar
Q max 15 l/min



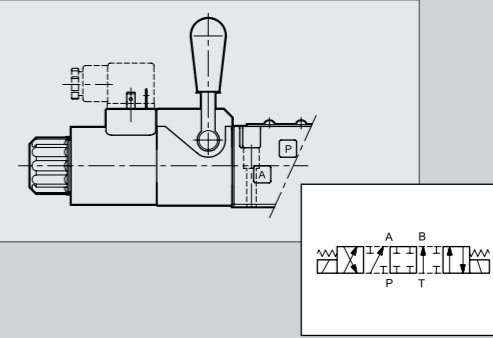
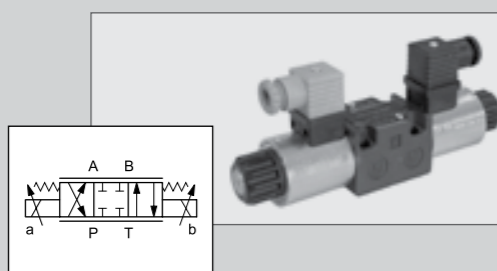
**SOLENOID OPERATED
DIRECTIONAL VALVE
IN COMPACT
EXECUTION - DL3**

p max 280 bar
Q max up to 50 l/min



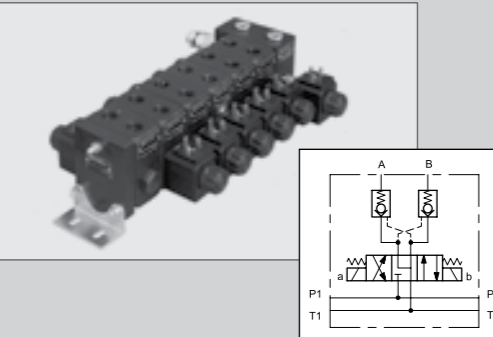
**PROPORTIONAL
DIRECTIONAL
VALVE - DSE3B**

p max 350 bar
Q max up to 40 l/min



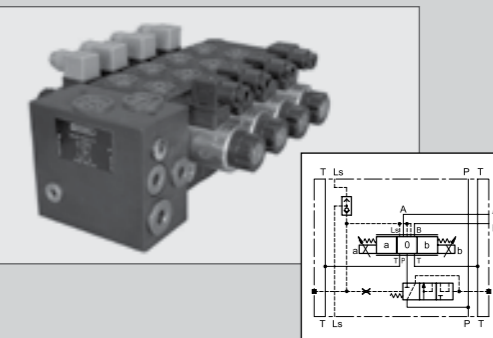
**SOLENOID OPERATED
VALVE WITH LEVER
MANUAL OVERRIDE - DS3**
Proportional version DSE3

Also available with
14V and 28V DC
power supply.
p max 350 bar
Q max 100 l/min



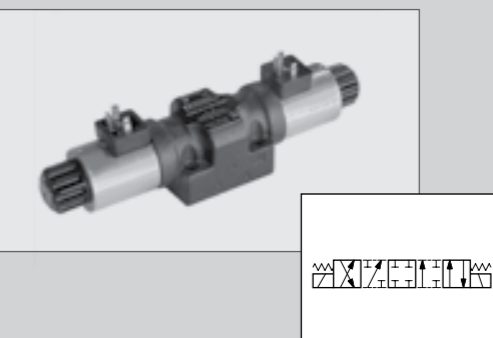
**BANKABLE DIRECTIONAL
CONTROL VALVE - BD6**

High protection degree against
atmospheric agents (IP67),
epoxy paint and DEUTSCH
connections available.
p max 280 bar
Q max 40 l/min



**BANKABLE LOAD-SENSING
DIRECTIONAL CONTROL
VALVE - BLS6**

It can be assembled up to 8 different
modules, either proportional or on-
off. High protection degree against
atmospheric agents (IP67), epoxy paint
and DEUTSCH connections available.
p max 300 bar
Q max up to 120 l/min



**SOLENOID OPERATED
DIRECTIONAL VALVE IN
COMPACT EXECUTION - DL5B**

Different types of connections
available.
Models specially treated with epoxy
paint may be provided as well.
p max 320 bar
Q max 125 l/min



**DIGITAL CONNECTOR FOR
OPEN LOOP PROPORTIONAL
VALVES - EDC-1**
I_{max} 2,6 A



CARTRIDGE VALVES
pressure control valves, check valves, poppet type valves

Case history: safety and high performances

The advanced and optimized design of EVERDIGM hydraulic crawler drill ensures safety and comfort as well as access to key components for an easy and fast maintenance. The 4 feet (1200mm) extension boom, available for the ECD40E-V model, allows to increase significantly both the drilling coverage range and the productivity.



The direct connection between the power unit (engine, compressor, and pump) and the centralized control valve provides, at the same time, increased fuel efficiency, less power loss and easy service. Furthermore, a large capacity air compressor and a high performance drifter make ECD40 / ECD40E one of the most productive drills in its class.

The ARC block, developed by P&F Hydraulics, plays an important role as Auto Rod Changer. **The block was assembled using Duplomatic bankable directional control valves (BD6P-C3 and BD6P-S3), solenoid operated directional control valves (DS3-S3), and various cartridge valves.**