

**... in over 50 countries
worldwide.**

**DELIMON Cooling
Office UK**
PO Box 11
Holmer Road
Hereford
HR4 9SJ
Telephone +44 (0) 1432 277 277
Telefax +44 (0) 1432 377 209

**DELIMON
Headquarter**
Arminstraße 15
D-40227 Düsseldorf
Telefon +49 211 77 74-0
Telefax +49 211 77 74-210
info@delimon.de
www.delimon.de

**DELIMON
Office & Plant Beierfeld**
Am Bockwald 4
D-08344 Grünhain-Beierfeld

**DELIMON
Office Vienna**
Am Spitz 2-3 / Schloßhofer Str. 4-6
Stiege 4, Top 20
A-1210 Wien
Telefon +43 1 585 66 17
Telefax +43 1 585 66 17-50
info@delimon.at
www.delimon.at

LUBRIMONSA
Avda. Txori-Erri 38
48150 Sondica – (Vizcaya)
Teléfono +34 94 453 20 00
Fax +34 94 453 25 00
lubrimonsa@lubrimonsa.es

**DELIMON-Denco Lubrication
Office UK**
PO Box 11
Holmer Road
Hereford
HR4 9SJ
Telephone +44 (0) 1432 277 277
Telefax +44 (0) 1432 377 209

BIJUR Products, Inc.
BP 50
ZI de Courtabœuf
5, Avenue de l'Atlantique
91942 Les Ulis Cedex
Tél. +33 1 692 985 85
Fax +33 1 690 776 27
contact@bijur.fr

SI Englisch 1.000 / 0501 · Artwork: dw. Marketing-Kommunikation / Mei, D-47906 Kempen, Tel. +49 2152 559099

iCool

**innovative & intelligent
cooling**


DELIMON
Cooling

iCool

The Delimon compact, modern, high performance range of packaged water chillers are the result of many years experience in refrigeration technology.

The refrigeration system is of the direct expansion type. Fully hermetic scroll type compressors or semi-hermetic compressors are used in conjunction with aluminium finned, copper tube air cooled condenser (water cooled version available on request). The evaporator consists of copper tubed coil immersed in the water holding tank.

They have been designed for the process and industrial markets where temperature fluctuation and system volumes are critical. The chiller has its own on-board high volume buffer tank which is fully insulated. The on-board water circulating pumps are selected for the required process flow and pressure but as standard give the recommended flow at 3 bar pressure.



refrigeration schematic

Model	DPI	M4	015	020	031	051	081	121 (101)	151	201	251	301	351	401	502	602	702	802	
Cooling capacity*	kW	4.58	6.67	9.58	14.24	18.64	25.1	37.08	41	49.41	61.5	73.95	95.05	104	123.7	149.12	172	167.00	
Compressor input	kW	1.2	1.86	2.36	3.68	4.99	6.79	9.74	11.3	14.23	18.46	22.96	28.07	33	36.72	45.56	55.4	66.6	
Power supply (60 Hz on request)	V/ph/Hz	220/160 / 400 / 3 / 50 (no neutral)																	
Water tank capacity	Litres	23	60	60	110	110	210	210	300	300	470	470	470	470	530	530	2 x 470	2 x 470	
Standard pump	Water flow L/s	Min	0.13	0.13	0.33	0.27	0.27	0.83	0.83	0.83	1.83	1.83	1.83	1.83	4.16	4.16	4.16	4.16	
	Max	0.41	0.41	0.66	1.00	1.00	2.66	2.66	2.66	3.66	3.66	3.66	3.66	8.33	8.33	8.89	8.89		
	Pressure Bar	Min	2.9	2.9	3.00	2.30	2.30	2.30	2.30	3.10	3.30	3.30	3.30	3.30	2.50	2.50	3.2	2.50	
Max	4.0	4.40	4.80	3.70	3.70	3.10	3.10	3.10	3.70	3.60	3.60	3.60	3.60	3.20	3.20	3.7	3.20		
Power Input	kW	0.45	0.45	0.75	0.55	0.55	1.10	1.10	1.10	1.5	2.2	2.2	2.2	2.2	3.0	3.0	3.0	3.00	
Fans	No.	n.	1	1	1	1	1	1	1	2	2	3	3	3	4	4	6	6	
	Air flow m ³ /h		1152	2628	3708	5112	5364	9360	11628	12000	17712	17208	26244	27576	28000	34848	39852	52560	58320
Power per motor	kW		0.073	0.115	0.20	0.32	0.42	0.69	0.98	0.98	0.69	0.69	0.69	0.98	0.98	0.69	0.98	0.67	0.98
Dimensions mm	L		740	830	830	980	980	1280	1280	1930	1930	2580	2580	2580	3520	3520	3900	3520	
	W		550	650	650	850	850	990	990	990	990	990	990	990	990	990	2000	2000	
	H		885	1320	1320	1650	1650	1850	1850	2075	1960	1960	1980	1980	2175	2050	2050	1835	1835
Connection	Water		1/2"	1/2"	1/2"	1"	1"	1 1/4"	1 1/4"	1 1/4"	1 1/2"	1 1/2"	2"	2"	2"	3"	3"	3"	3"
Weight	kg		95	170	190	280	300	520	560	600	760	860	1010	1100	1200	1600	1720	1800	1850

Outlet water temperature							
°C	-5	0	5	10	15	20	
M1	0,61	0,71	0,82	0,95	1,07	1,14	
Corrected capacity = Nominal capacity x M1 x M2 x M3							
Glycol % by weight							
	0	10	20	30	40	50	
M2	1	0,99	0,98	0,97	0,96	0,94	
Ambient temperature (°)							
°C	15	20	25	30	35	40	43
M3	1,11	1,05	1,00	0,94	0,88	0,81	0,75

DESCRIPTION

Compact design, the DPI chiller can be installed indoor or outdoor very easily. Its inner hydronic module resists to inlet water flow and temperature variations and avoids freezing. The digital controller and safety devices allow full reliability and an easy maintenance. With multiple variations and options available the DPI chiller range is ideal for all types of industrial cooling applications.

CONSTRUCTION

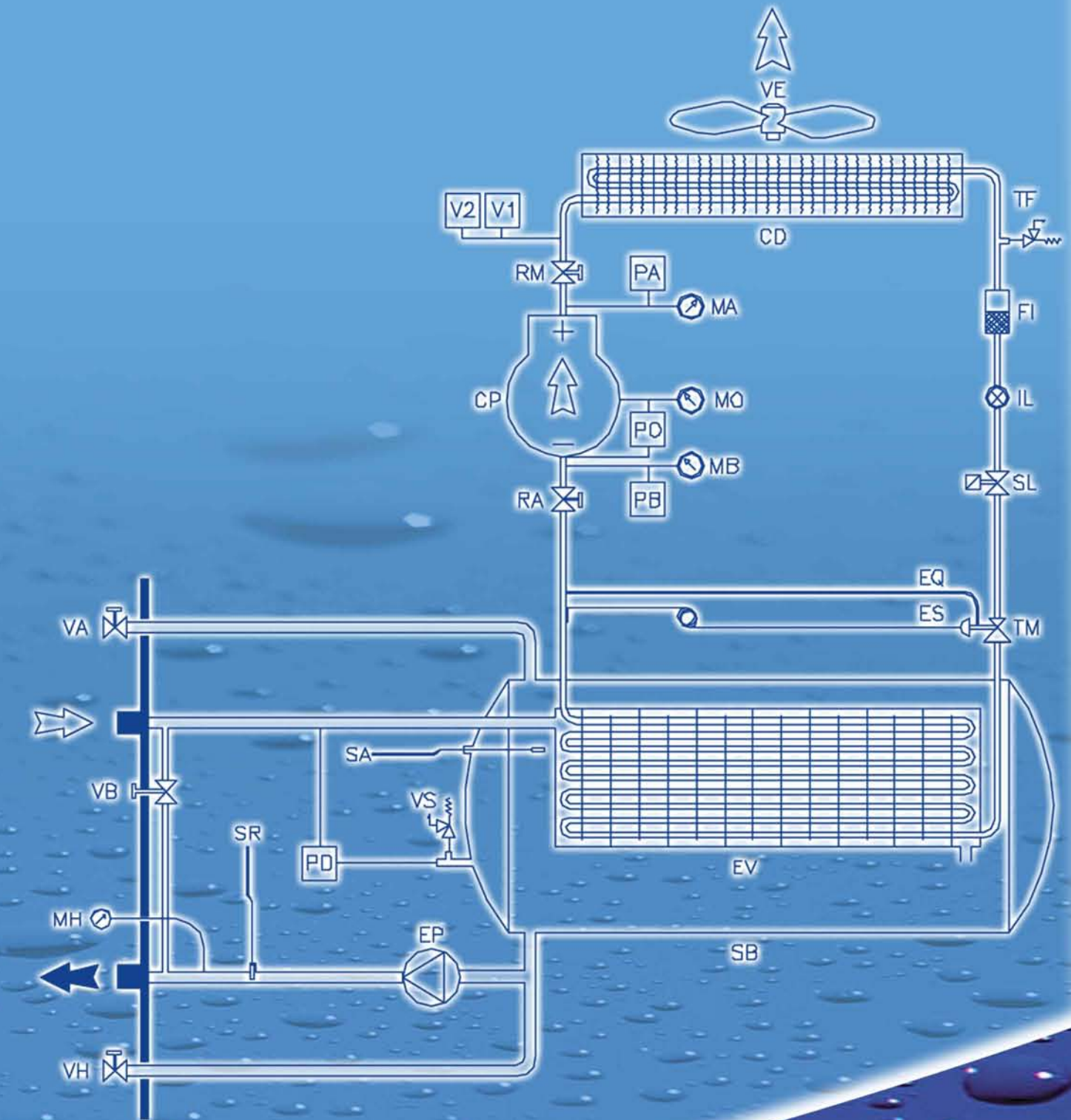
- Frame: Epoxy painted galvanised steel
- Casing: Anti-corrosion aluminium sheet
- Compressor: Scroll hermetic type (upto 101)
Semi-hermetic type (201 – 602)
- Regulation: Controller with digital display of set points and alarms.
Remote control and alarms as standard futures.

OPTIONS

- Open or closed expansion tank
- 5 bar pump
- Low temperature applications
- Water cooled condenser
- Electronic modulating fan speed control
- Twin pumps
- Condenser air intake filter
- Low noise version

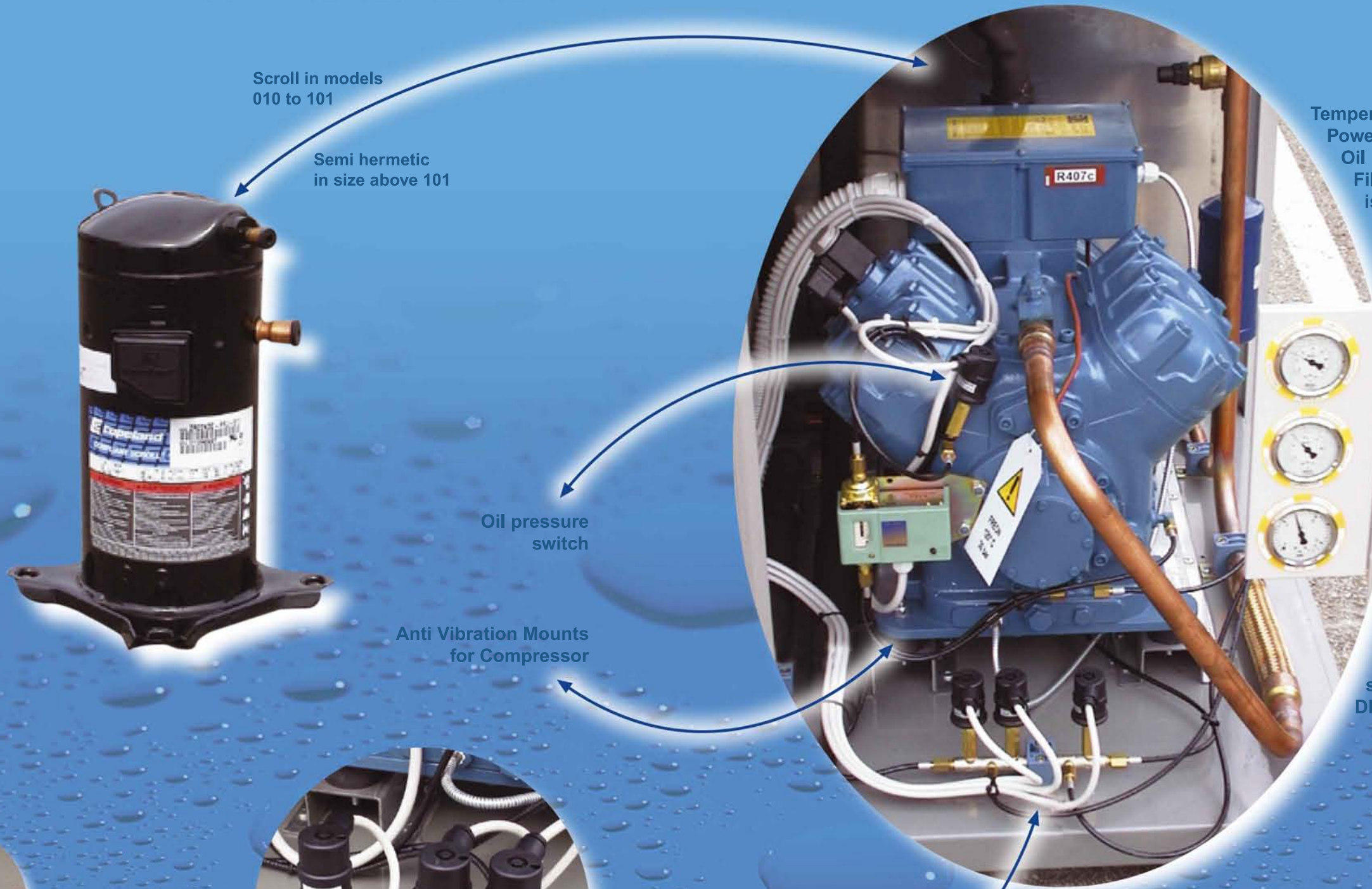


- CP Compressor
- RM Discharge valve (081-602)
- Pa High pressure switch
- MA High pressure gauge (081-602)
- V1 1st stage Fan Pressure Controller
- V2 2nd stage Fan Pressure Controller (081-602)
- CD Condenser Coll
- VE Fan and Motor
- TF Safety valve (081-602)
- FL Filter Dryer
- IL Sight Glass
- SL Liquid Solenoid Valve (201-602)
- TM Thermostatic Expansion Valve
- EQ Eyuilization Line
- ES TEV Control Bulb
- EV Multitube evaporator
- RA Suction valve (081-602)
- PB Low pressure switch
- MB Low pressure gauge (081-602)
- MO Oil pressure gauge (251-602)
- VA Air Vent
- VB By-pass valve
- MH Water pressure gauge
- VH Water Drain Valve
- SA Antifreeze Sensor
- SR Control Sensor
- PD Differential Pressure switch
- VS Safety valve
- EP Pump
- SB Buffer Tank





All the features - Compressors



Scroll in models
010 to 101

Semi hermetic
in size above 101

Temperature control
Power regulation
Oil level indicator
Filter dryer and
isolating valve
Condenser
Evaporator

Oil pressure
switch

Anti Vibration Mounts
for Compressor

HP / LP
pressure
gauges
starting from
model DPI
081 plus
oil pressure
gauge
starting from
model DPI
201

Equipped with
anaconda on
discharge
starting model
DPI 201.

HP, LP and head
pressure control
switches,
resiliently
mounted.

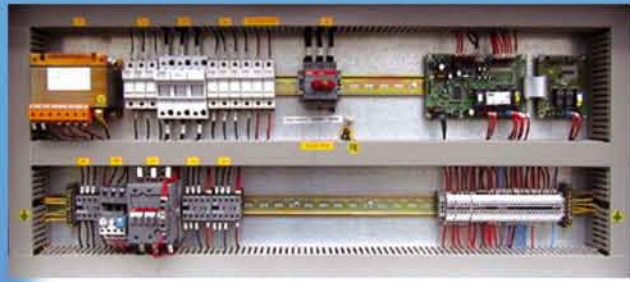


Sight Glass

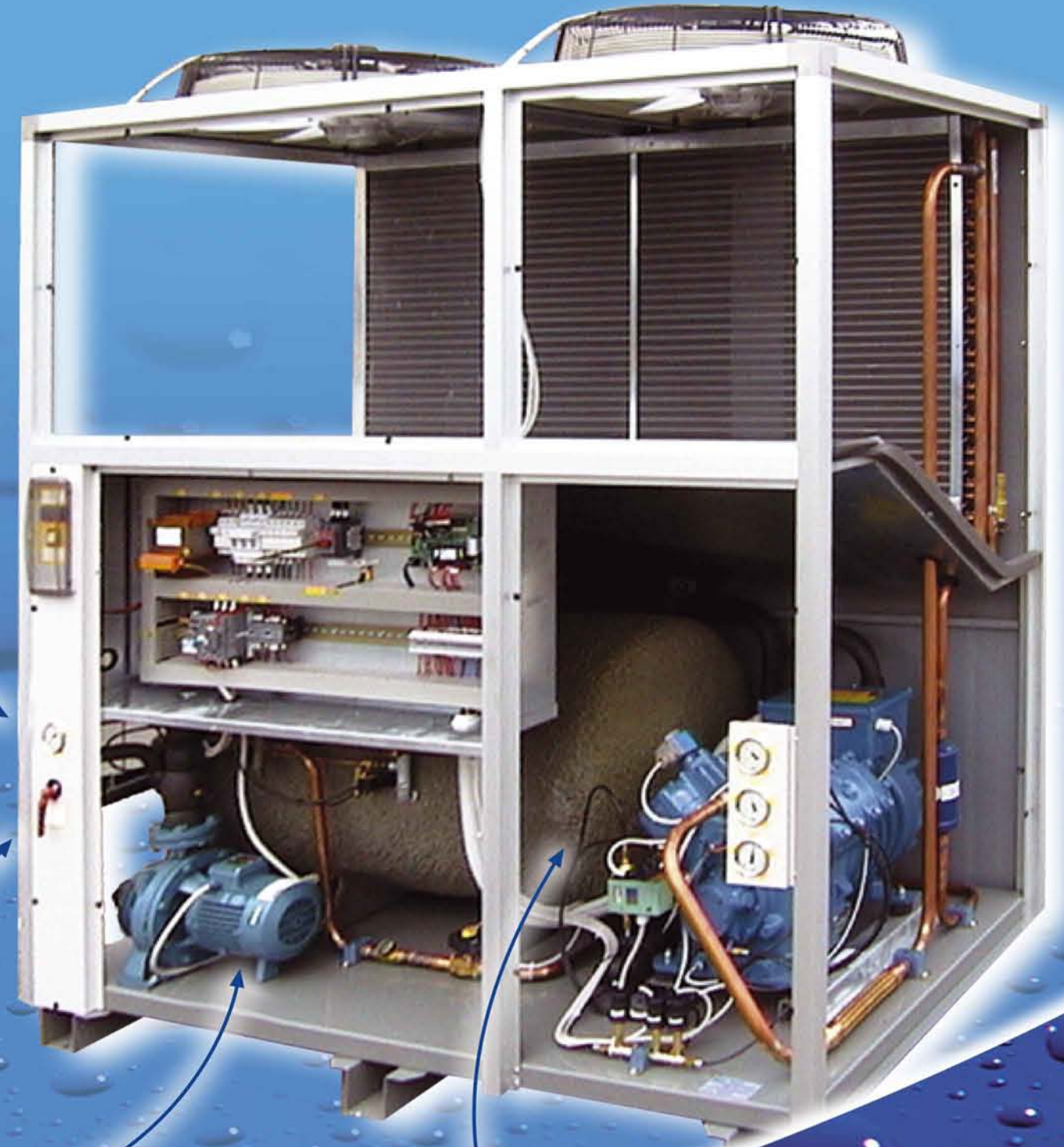




All the features - Water and Electrical Sections



Electrical panel conforms to EC standards and allows 30% free space. ABB and Siemens components used as standard.



Water pressure gauge Protects against low water flow by monitoring the pressure between the buffer tank entry and the pump outlet.



Adjustment of pressure / flow by _ turn bypass valve mounted on the front panel Protection against downstream water flow stop by a gauged bypass

Pump with cast iron body Electric motor IP 55 with brass turbine for protections against seizure in prolonged off periods Self lubricating and easily accessible

Evaporator: Copper evaporator fully immersed in a treated steel buffer tank for protection against freezing. Intensive to electrolysis - aluminium free. Scientifically designed for better water flow and guaranteed passage through the heat exchanger before storage in the buffer tank.